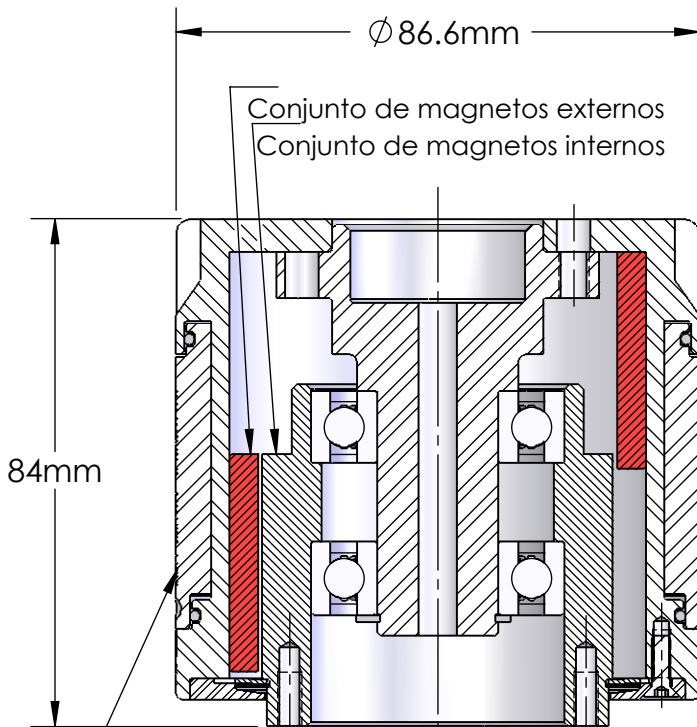
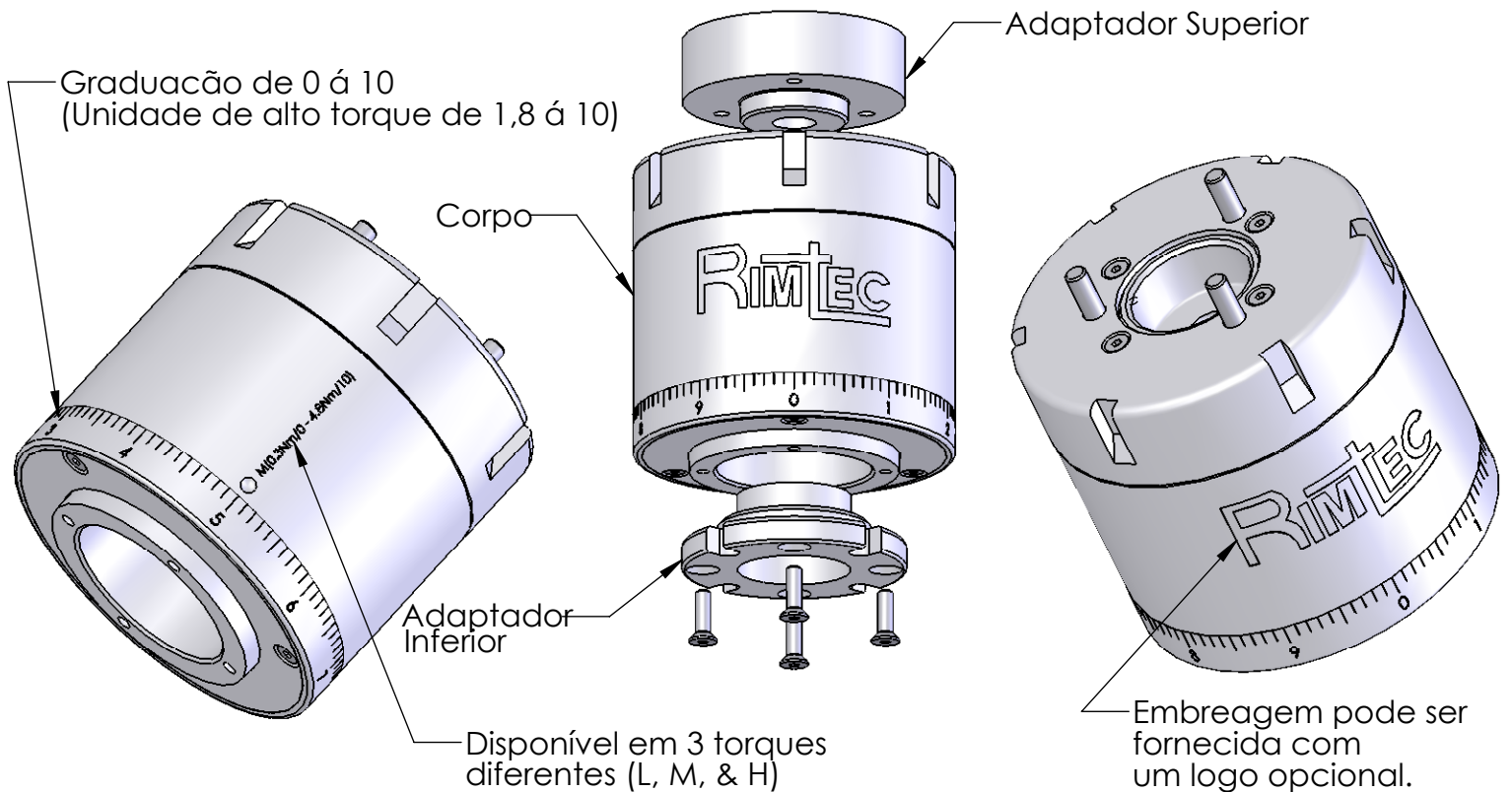


RCC 866 - ROSQUEADEIRA MAGNÉTICA (DE TORQUE CONTROLADO)



RCC 866 - ROSQUEADEIRA MAGNÉTICA (DE TORQUE CONTROLADO)



Magnetos externos mostrando a posição de torque máximo.

Magnetos externos mostrando a posição de torque mínimo.

Rotacionando o disco de torque (ajuste manual), você move os magnetos externos para cima e para baixo, alterando o acople.

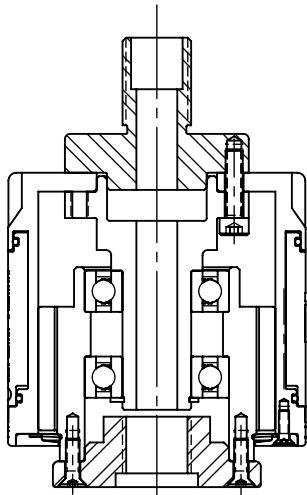
- Conjunto por hysteresis.
- Desengate suave.
- Alta precisão.
- Baixa inércia.
- Em aço inoxidável.
- Selada para lavagem.
- Ajuste linear de torque.
- Torque ajustavel sem ferramenta.
- Preço competitivo.
- Distribuidores e suporte mundiais.

3 ranges de torque:
0.2 - 2.8 Nm (2 - 25 lb-in) Baixo
0.3 - 4.8 Nm (3 - 42 lb-in) Medio
2.0 - 5.7 Nm (18 - 50 lb-in) Alto

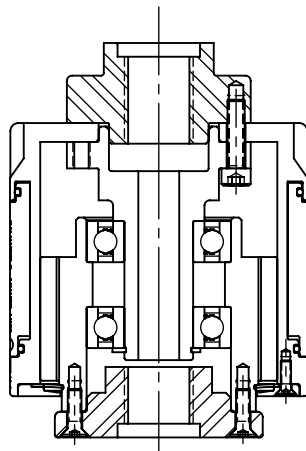
Design universal com diferentes adaptadores.

Eixos diferentes e passantes são opcionais.

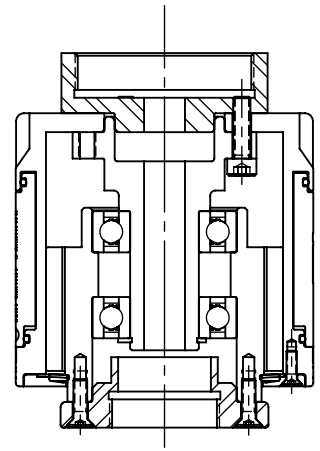
RCC 866 - ROSQUEADEIRA MAGNÉTICA (DE TORQUE CONTROLADO)



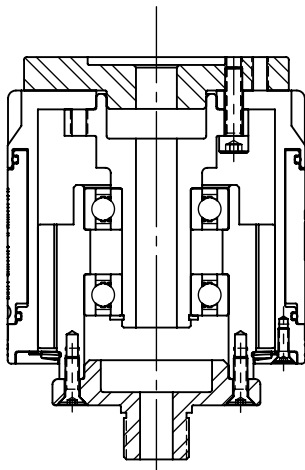
CONFIG 1



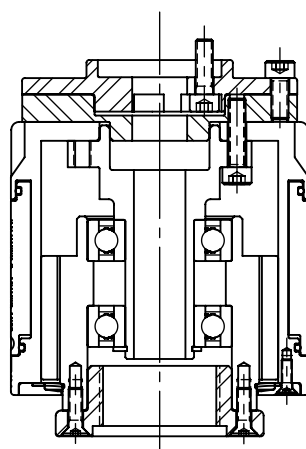
CONFIG 2



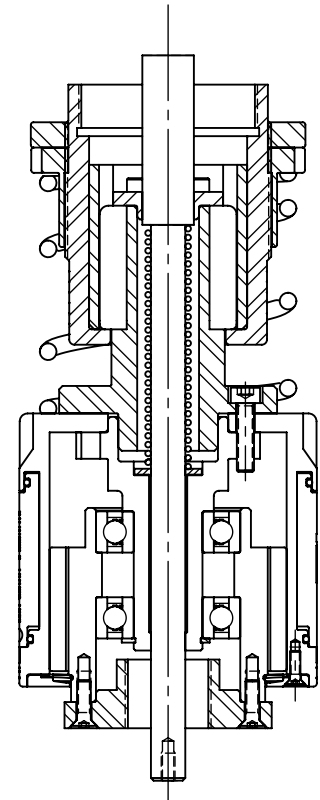
CONFIG 3



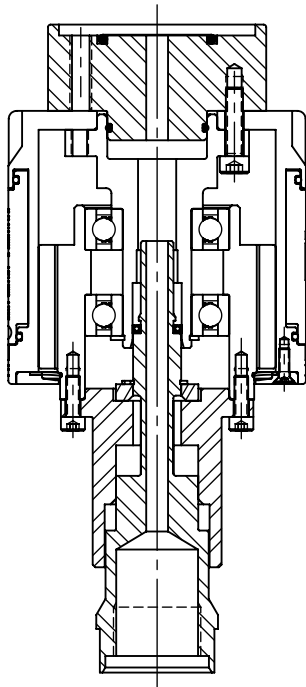
CONFIG 4



CONFIG 5



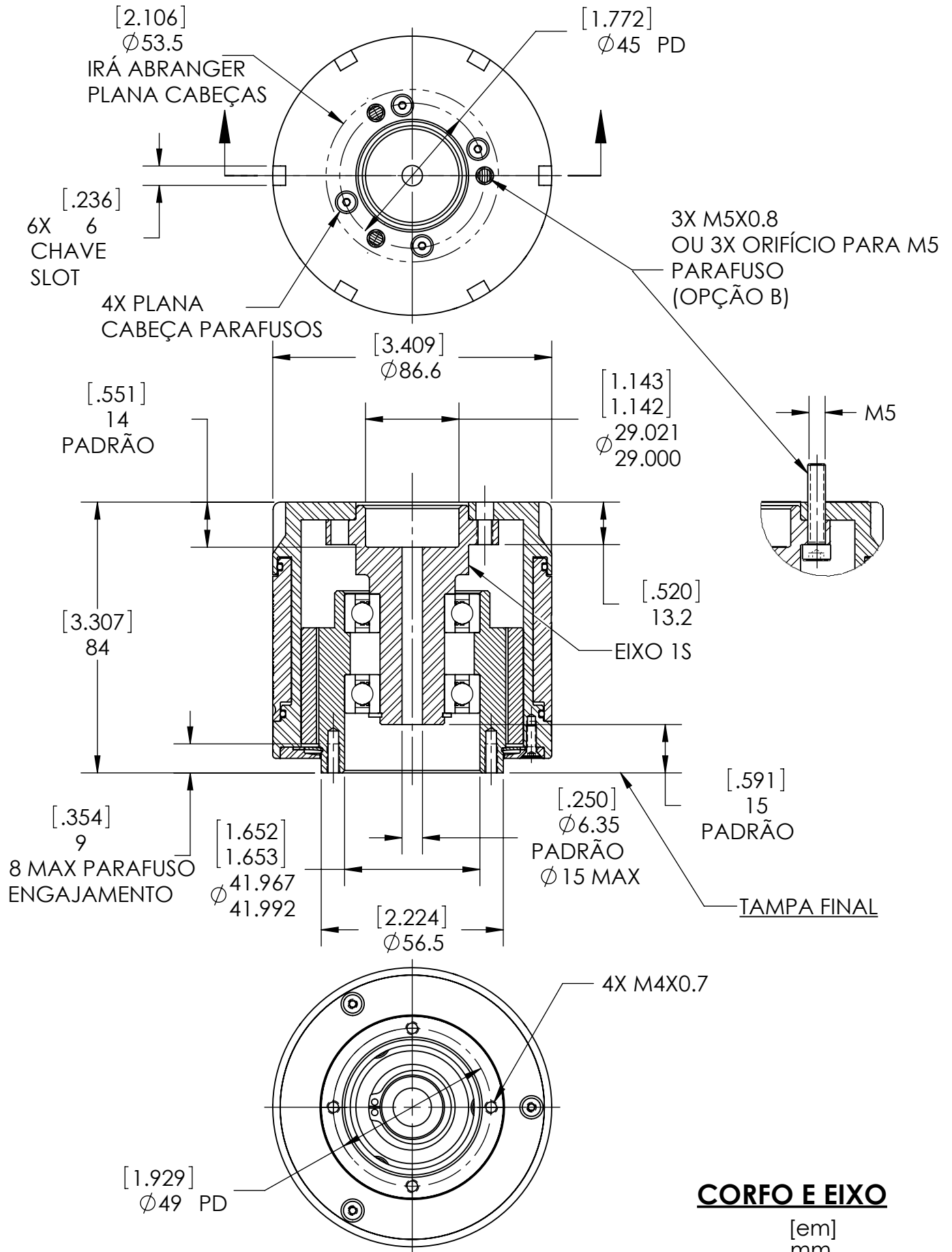
CONFIG 6



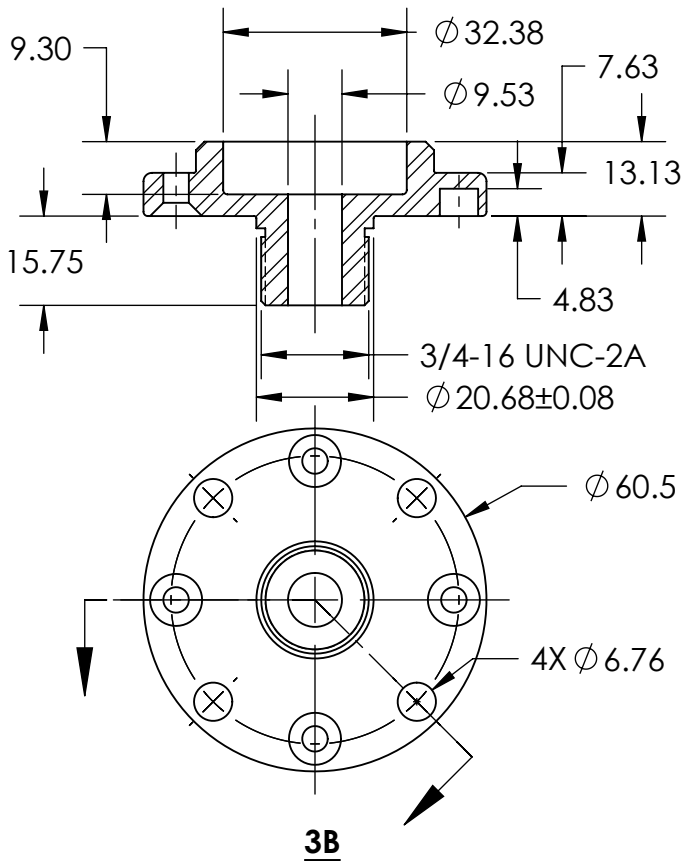
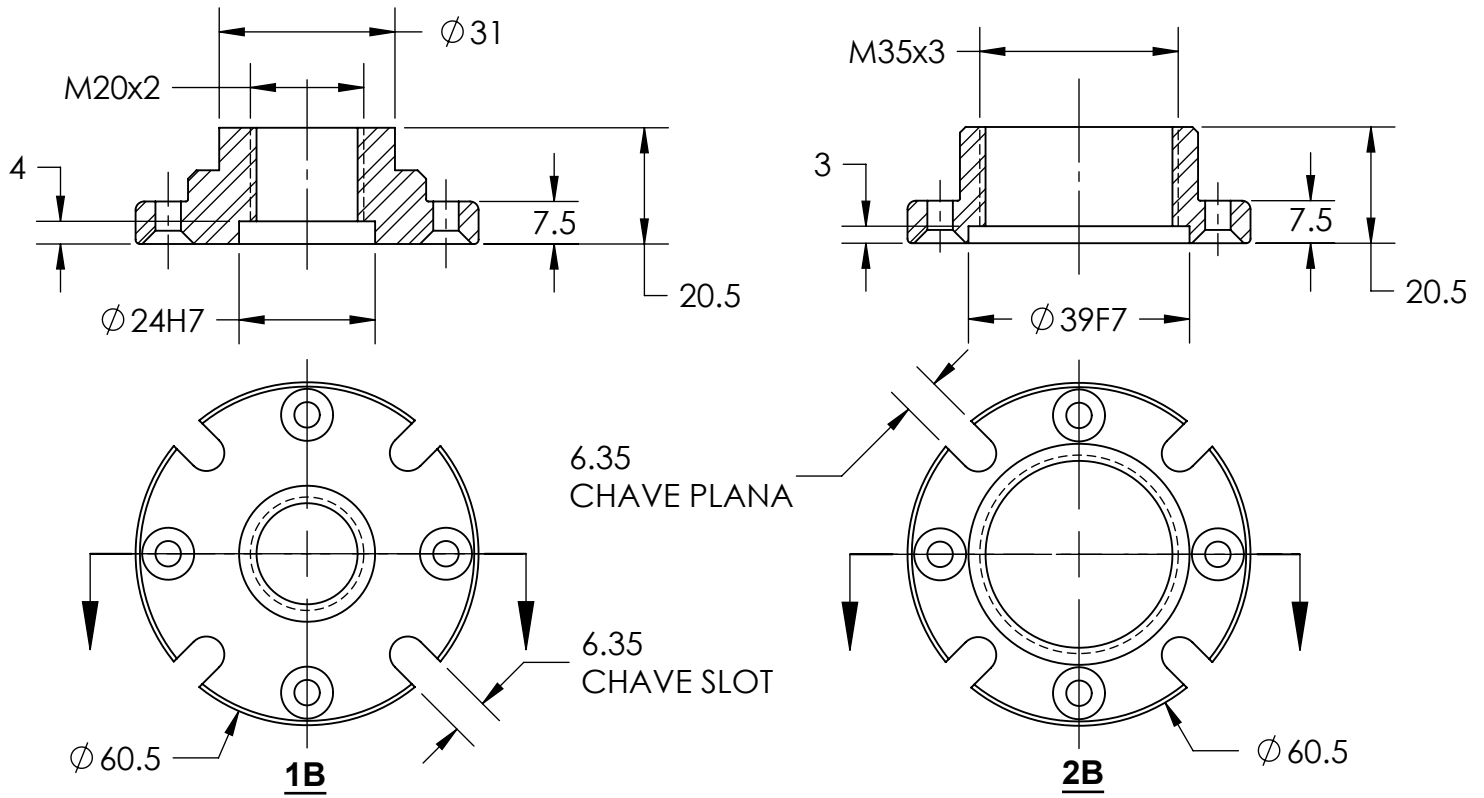
CONFIG 7

RECENTES CONFIGURAÇÕES

RCC 866 - ROSQUEADEIRA MAGNÉTICA (DE TORQUE CONTROLADO)

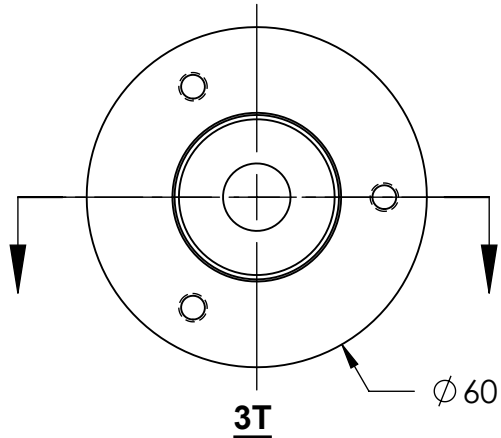
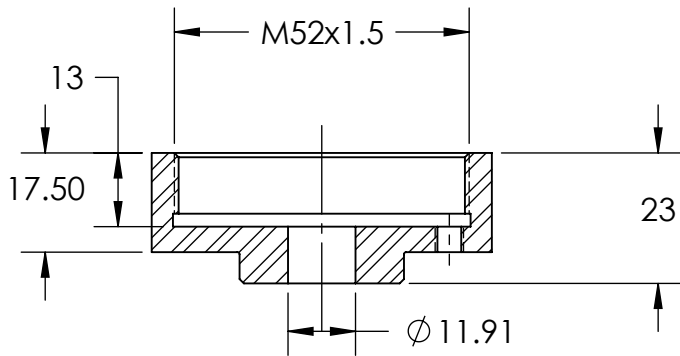
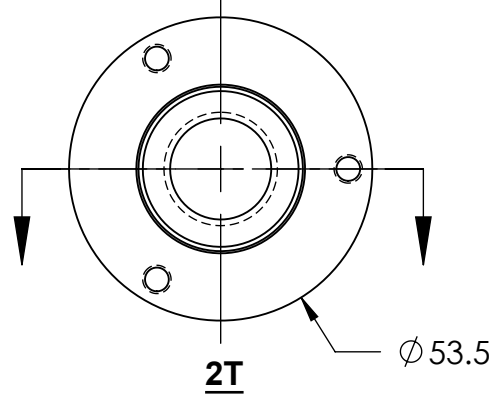
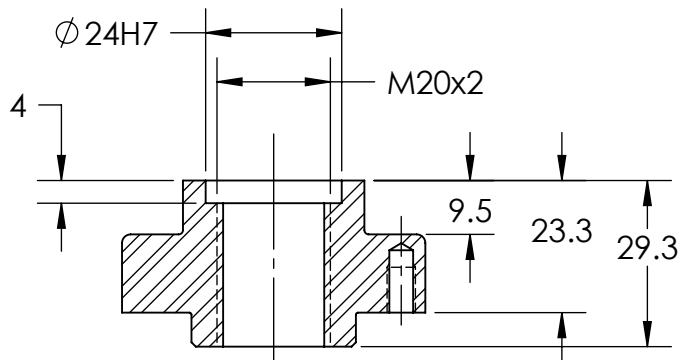
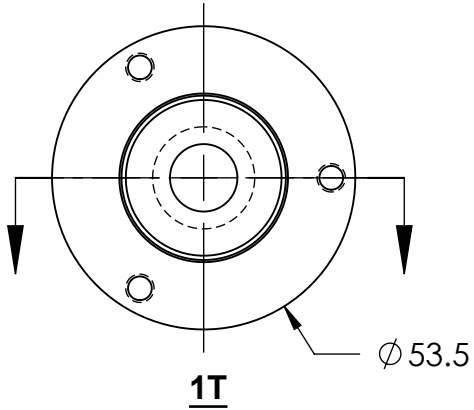
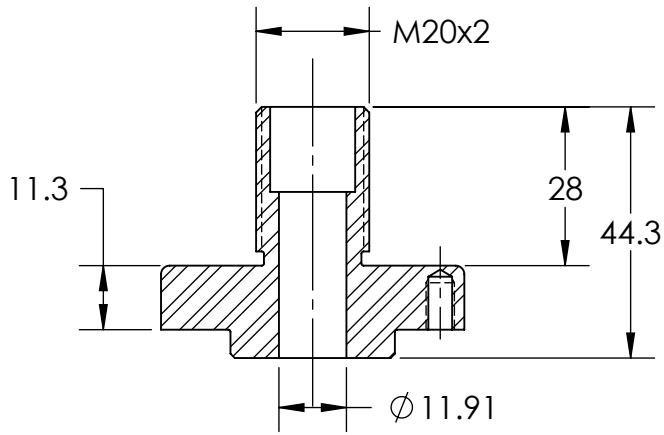


RCC 866 - ROSQUEADEIRA MAGNÉTICA (DE TORQUE CONTROLADO)

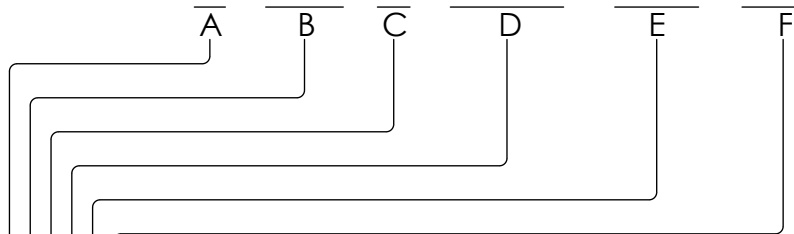


ADAPTADORES INFERIOR

RCC 866 - ROSQUEADEIRA MAGNÉTICA (DE TORQUE CONTROLADO)



ADAPTADORES SUPERIOR

RCC 866 - ROSQUEADEIRA MAGNÉTICA (DE TORQUE CONTROLADO)RCC866 - L - 1S12 - A - LOGO / 1TYY / 1BZZ

F- ADAPTADOR INFERIOR
 1B- PART NUMBER. VER FOLHA.
 ZZ- MODIFICAÇÃO, PROVIDER DESENHO OU DESCRIÇÃO.

E- ADAPTADOR SUPERIOR
 1T: PART NUMBER. VER FOLHA.
 ZZ: MODIFICAÇÃO, PROVIDER DESENHO OU DESCRIÇÃO.

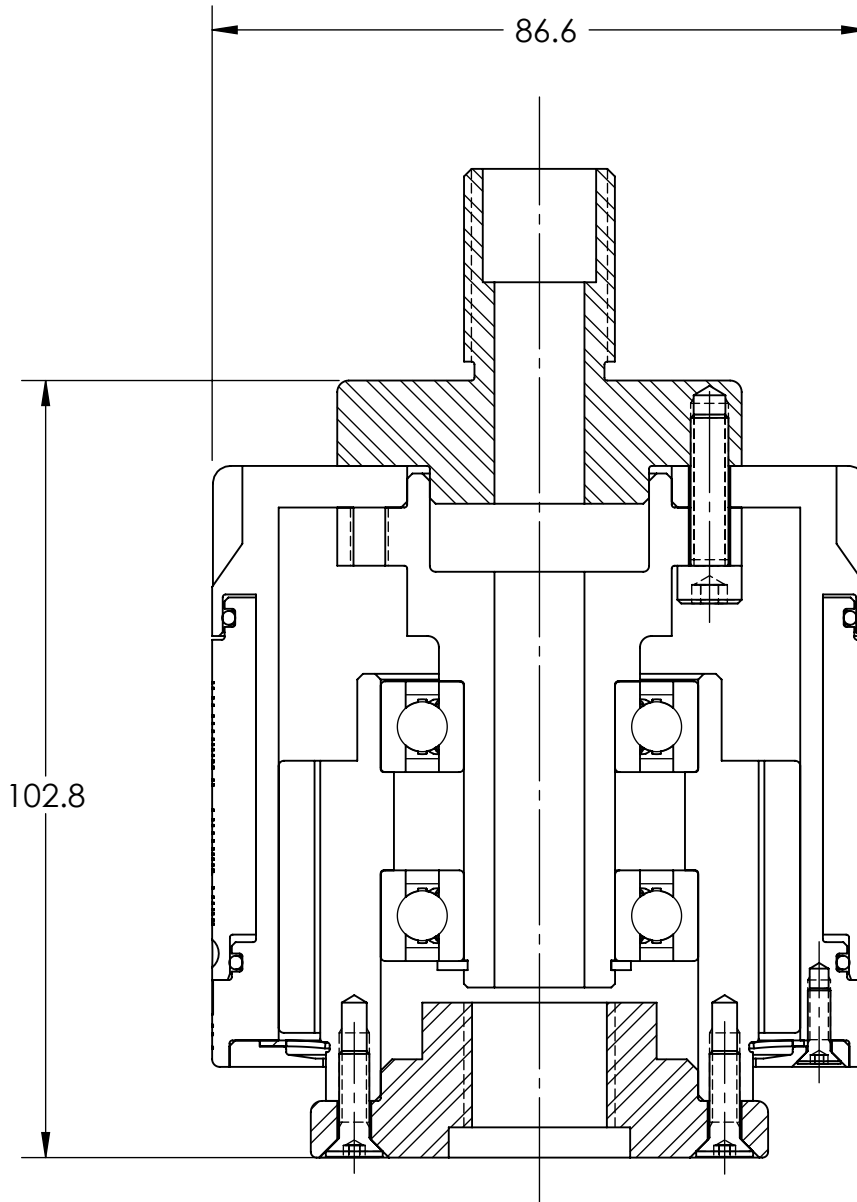
D- LOGO OPCIONAL. FORNECER RETALHES.
 "RIMTEC" É O PADRAO: DEIXE EM BRANCO.

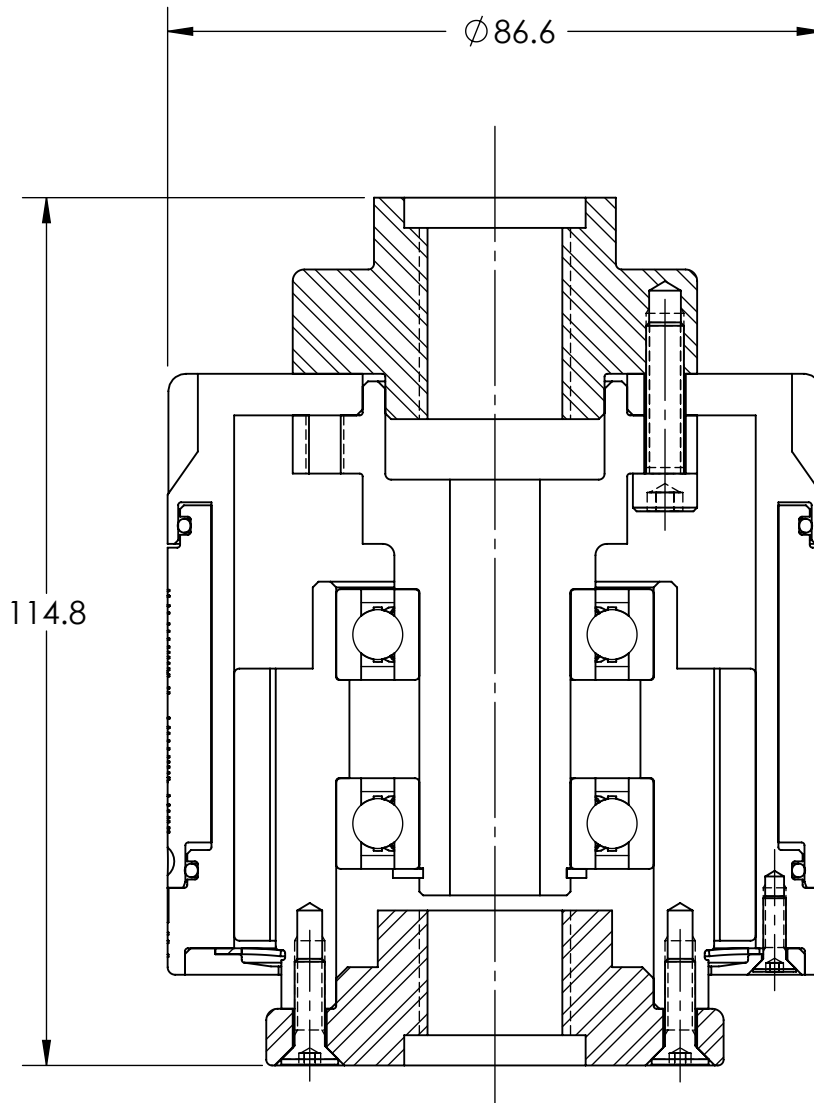
C- CONFIGURAÇÃO DO FURO SUPERIOR.
 OPÇÃO A: MONTADA COM FUIROS ROSCADOS M5 NO TOPO DO CORPO DA EMBREAGEM.
 OPÇÃO B: MONTADA COM 5.5 APURAMENTO BURACOS.

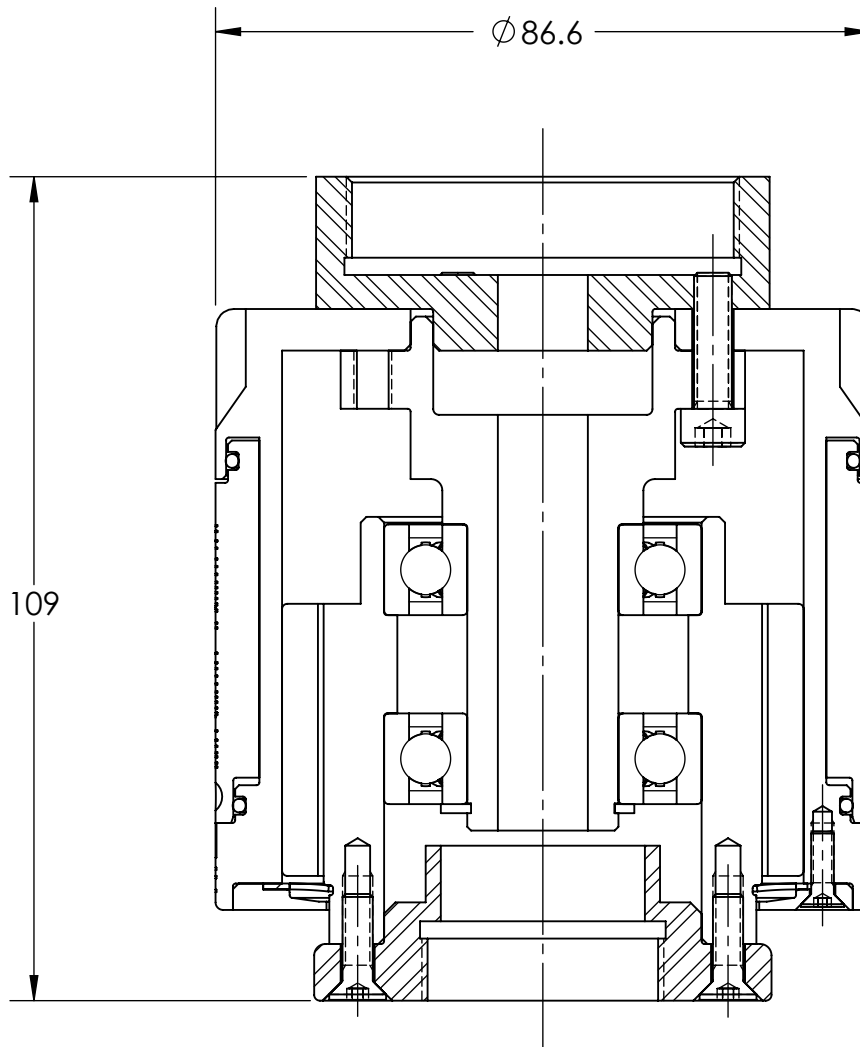
B- EIXO.
 1S- PART NUMBER.
 12: \varnothing 12mm FURO PASSANTE, TOL. +0.13.
 1S6.35 É PADRÃO.

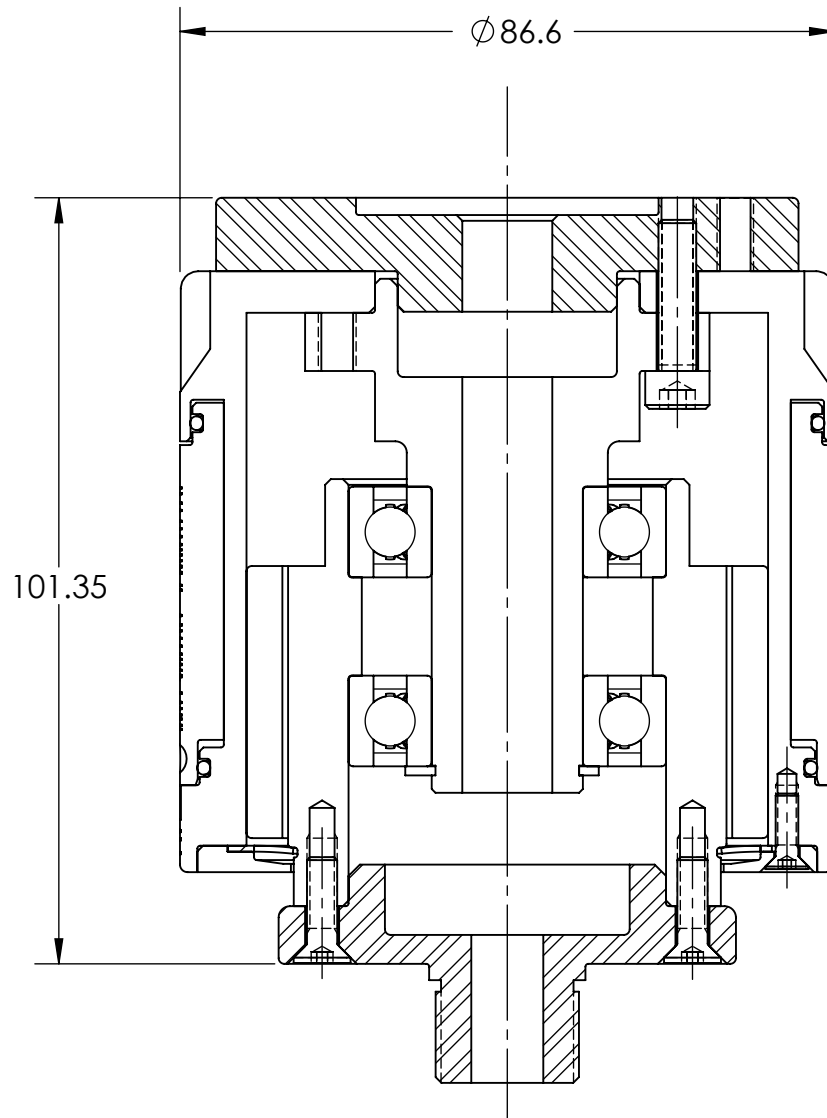
A- RANGE DE TORQUE.
 L: 0.2 - 2.8 Nm (2 - 25 lb-in) BAIXO
 A UNIDADE É MARCADA COM "L(0.2Nm/0 - 2.8Nm/10)"
 M: 0.3 - 4.8 Nm (3 - 42 lb-in) MEDIO
 A UNIDADE É MARCADA COM "M(0.3Nm/0 - 4.8Nm/10)"
 H: 2.0 - 5.7 Nm (18 - 50 lb-in) ALTO
 A UNIDADE É MARCADA COM "H(2.0Nm/1.8 - 5.7Nm/10)"

CÓDIGO DE PEDIDO

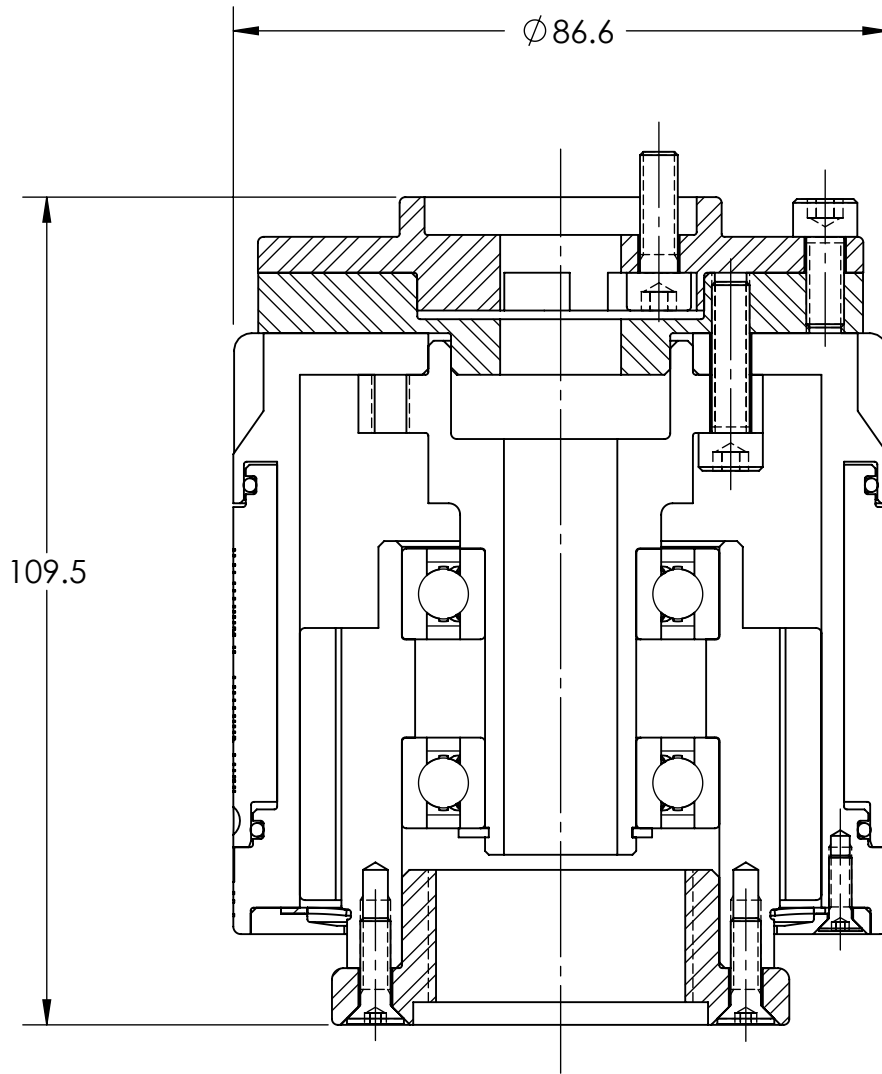
RCC 866 - ROSQUEADEIRA MAGNÉTICA (DE TORQUE CONTROLADO)**CONFIGURAÇÃO 1**

RCC 866 - ROSQUEADEIRA MAGNÉTICA (DE TORQUE CONTROLADO)**CONFIGURAÇÃO 2**

RCC 866 - ROSQUEADEIRA MAGNÉTICA (DE TORQUE CONTROLADO)**CONFIGURAÇÃO 3**

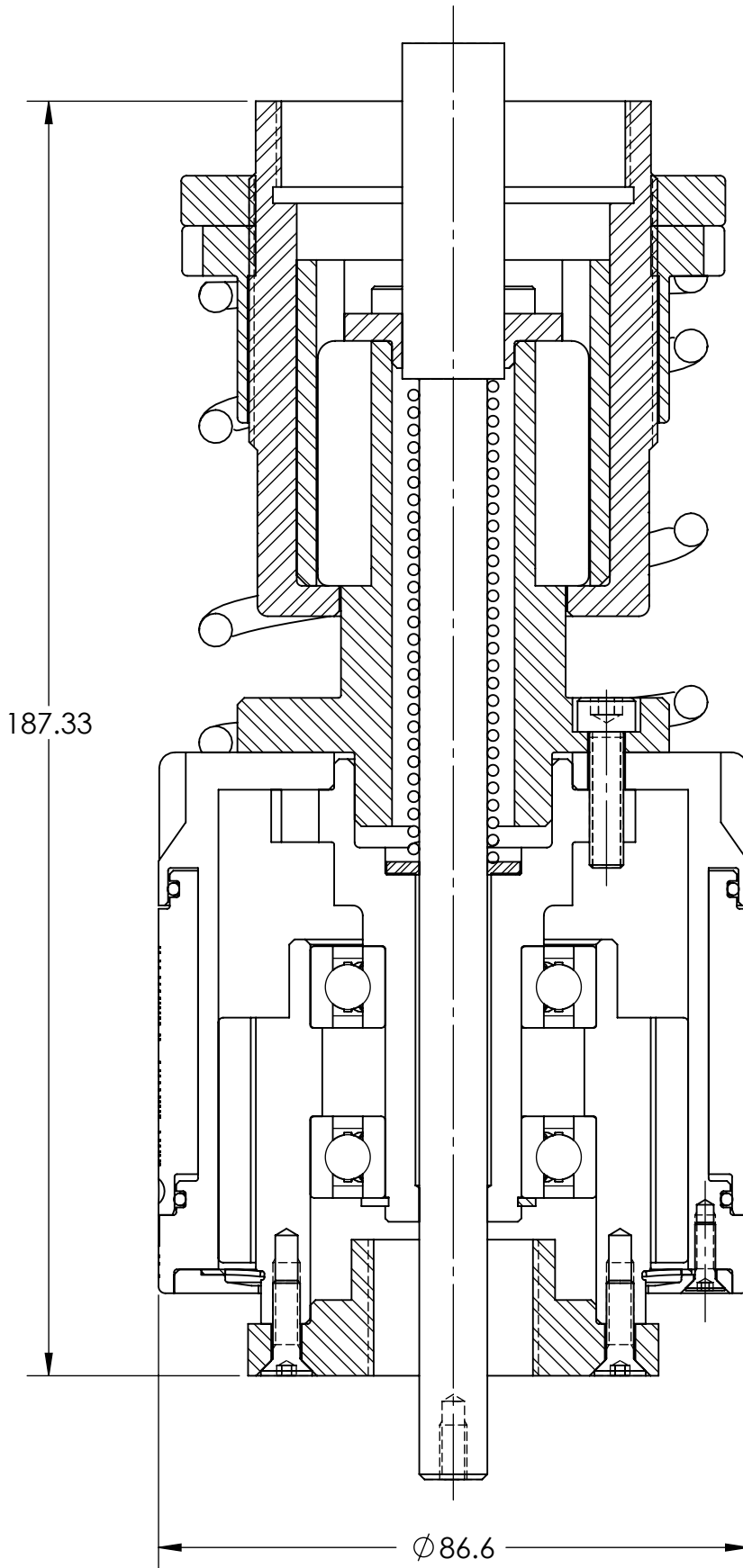
RCC 866 - ROSQUEADEIRA MAGNÉTICA (DE TORQUE CONTROLADO)**CONFIGURAÇÃO 4**

RCC 866 - ROSQUEADEIRA MAGNÉTICA (DE TORQUE CONTROLADO)



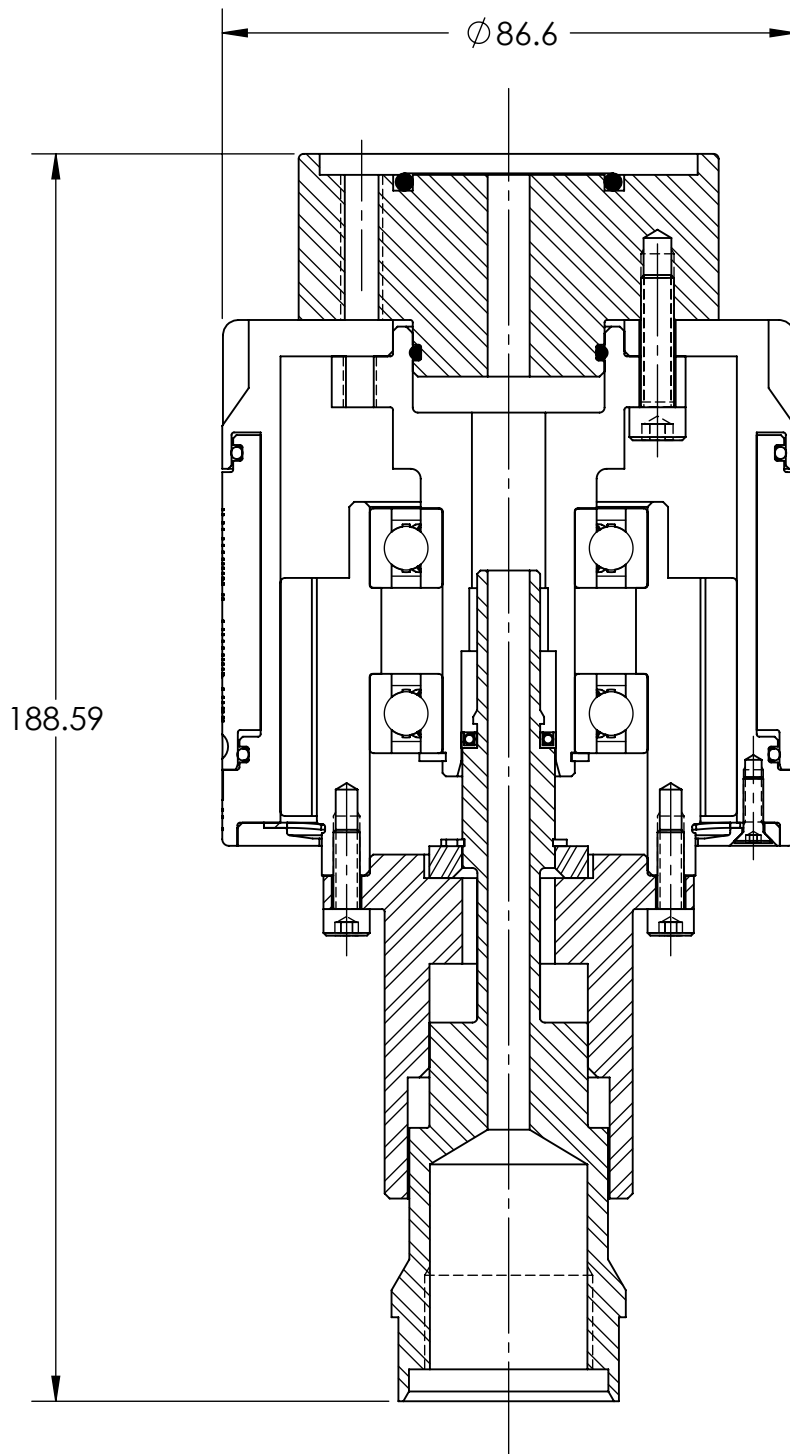
CONFIGURAÇÃO 5

RCC 866 - ROSQUEADEIRA MAGNÉTICA (DE TORQUE CONTROLADO)



CONFIGURAÇÃO 6

RCC 866 - ROSQUEADEIRA MAGNÉTICA (DE TORQUE CONTROLADO)



CONFIGURAÇÃO 7