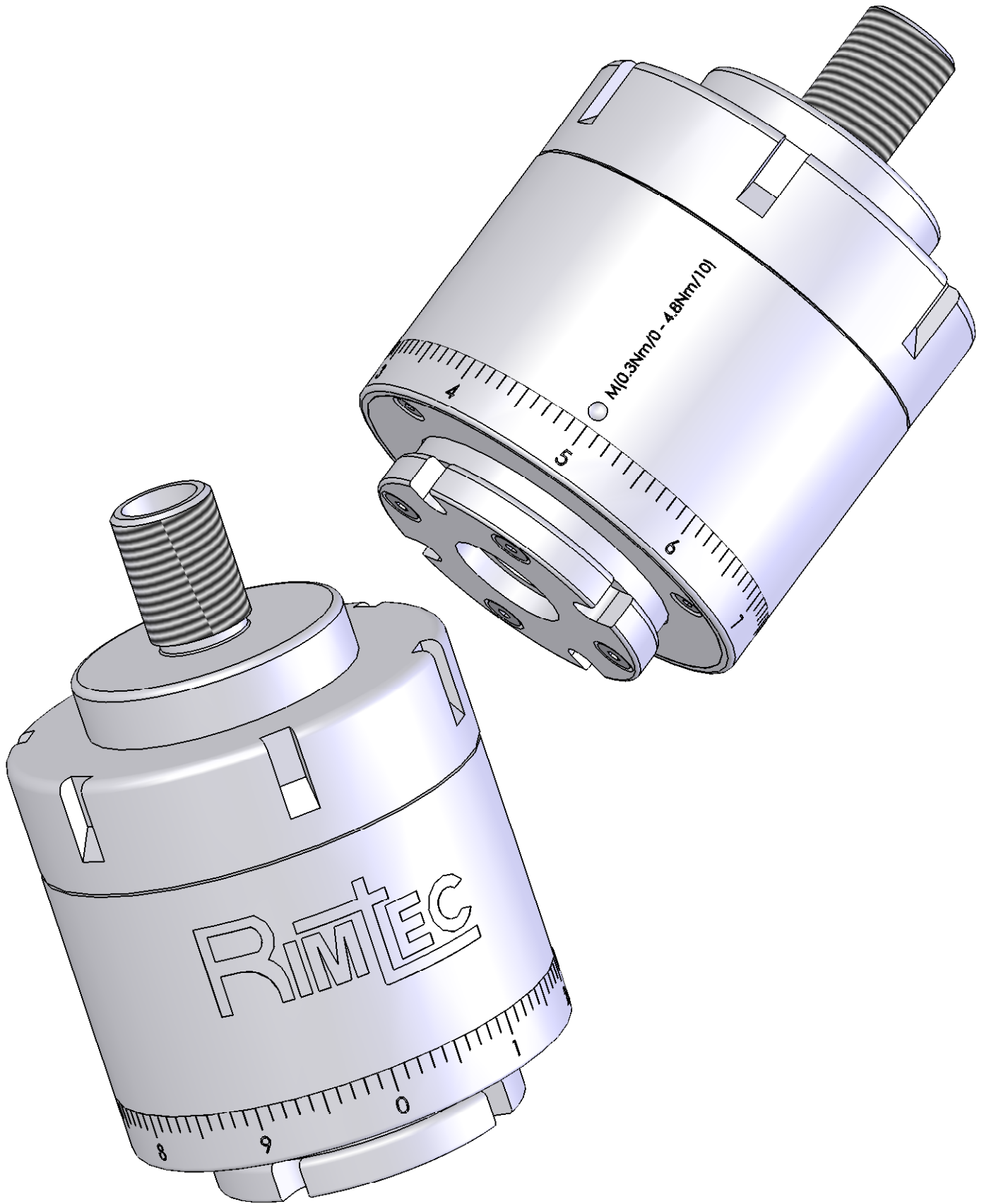
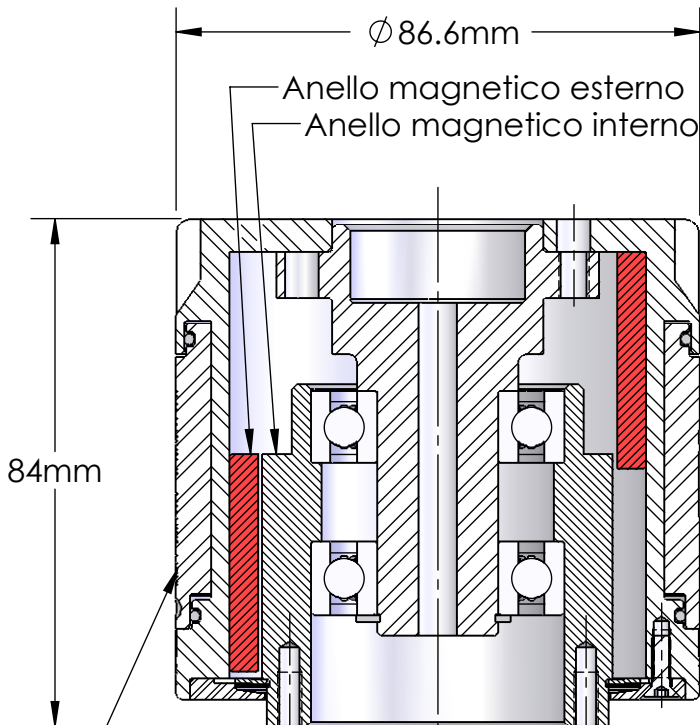
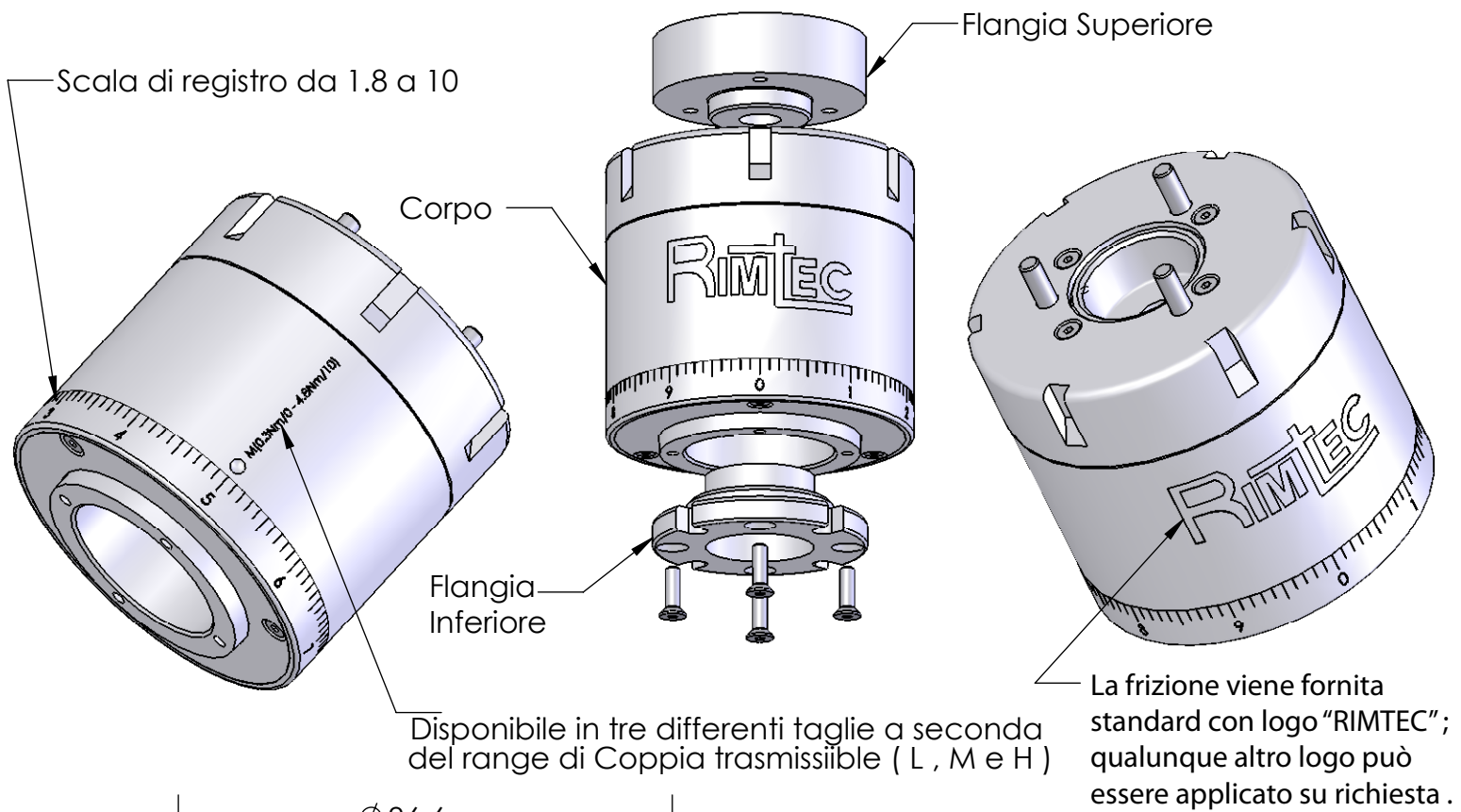


# RCC 866 - FRIZIONE AD INNESTO MAGNETICO

DOC.RCC866-080103



# RCC 866 - FRIZIONE AD INNESTO MAGNETICO



Anello magnetico esterno rappresentato in posizione equivalente alla massima coppia trasmissibile.

Anello magnetico interno rappresentato in posizione equivalente alla minima coppia trasmissibile.

La rotazione della ghiera di registro è possibile senza alcun utensile; intervenendo sulla ghiera si muove assialmente l'anello magnetico esterno regolando a piacere la coppia trasmissibile dalla frizione magnetica.

- Tecnologia ad isteresi magnetica
- Disinnesto uniforme e " dolce "
- Elevata precisione
- Bassa inerzia
- Realizzazione in acciaio inossidabile
- Completamente ermetico per immersione
- Ghiera di registro manuale
- Risposta lineare tra registro e coppia
- Prezzo competitivo e consegne in tempi rapidi
- Rete di distribuzione a livello mondiale

Tre grandezze disponibili in funzione della coppia trasmissibile :

taglia L ( low range ) – da 0.2 a 2.8 Nm

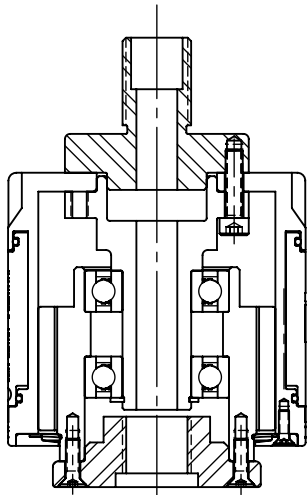
taglia M ( medium range ) – da 0.3 a 4.8 Nm

taglia H ( high range ) – da 2 a 5.7 Nm

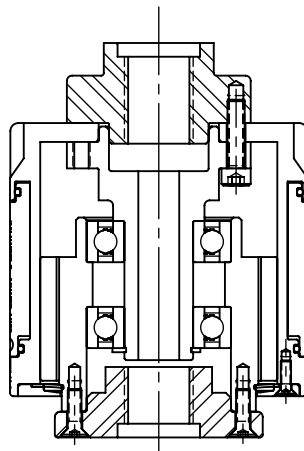
Disegno universale: le due flangie superiore e inferiore possono essere adattate in base al tipo di connessione richiesta senza intervenire sul corpo centrale.

Possibilità di differenti lavorazioni sull'albero

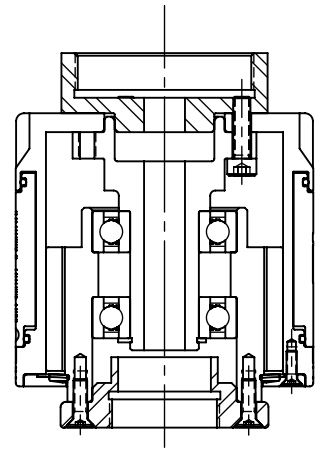
Possibilità su richiesta di applicare il proprio LOGO



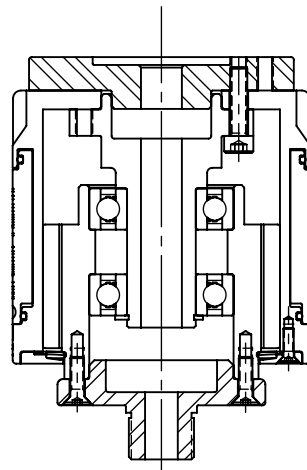
**CONFIG 1**



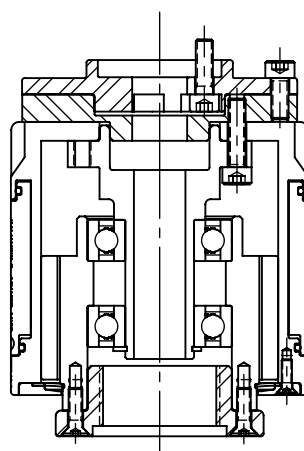
**CONFIG 2**



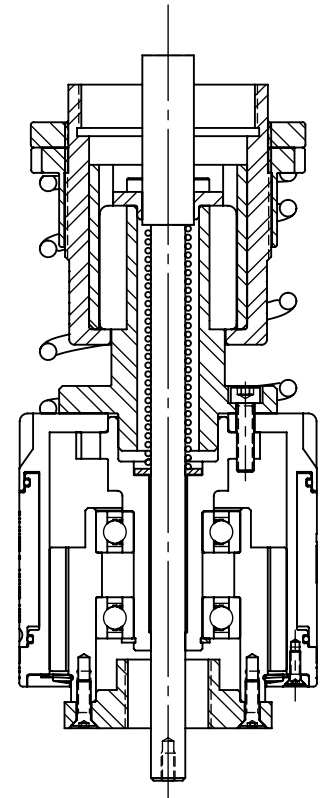
**CONFIG 3**



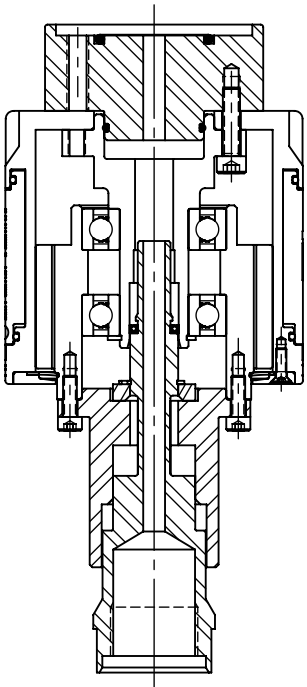
**CONFIG 4**



**CONFIG 5**



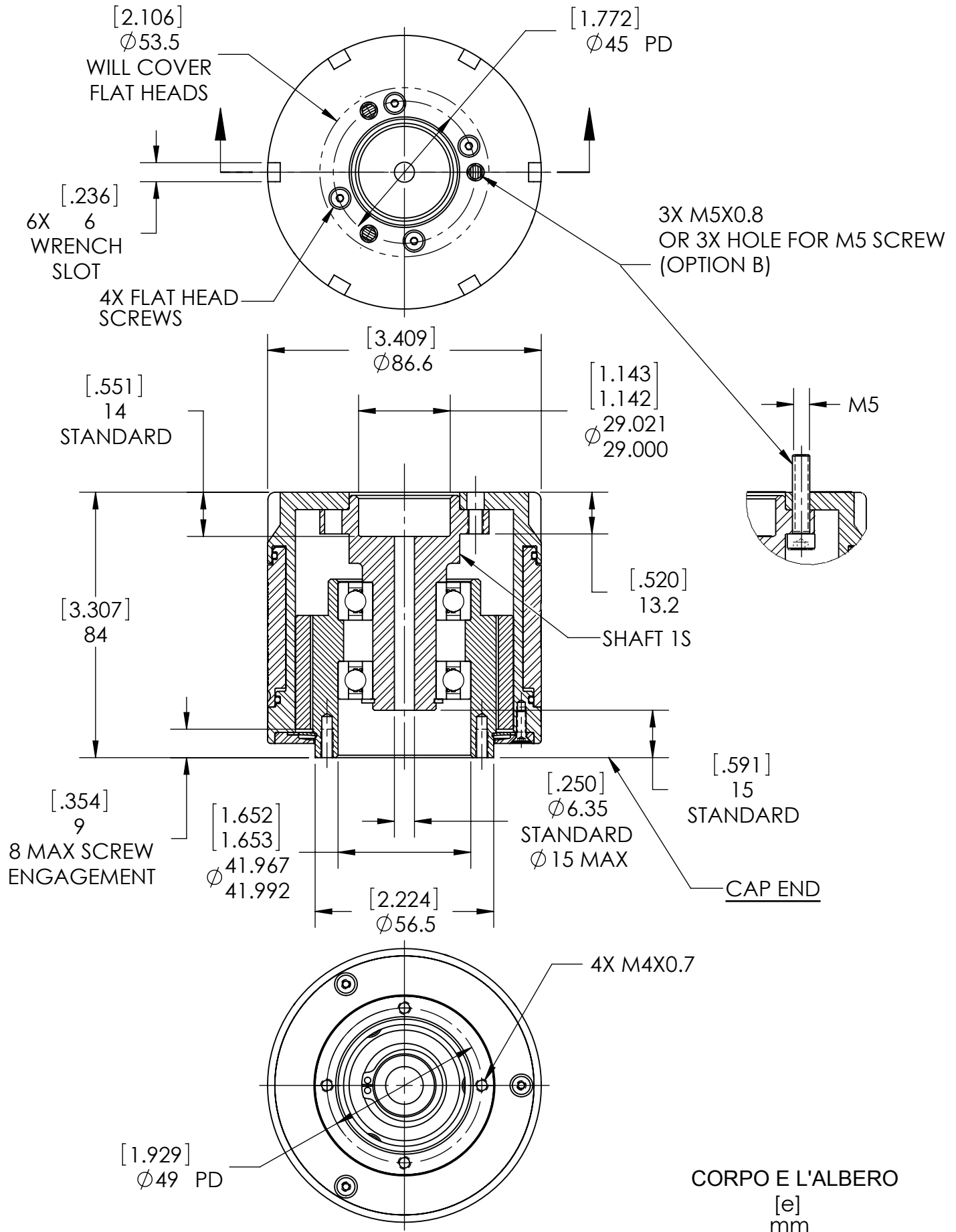
**CONFIG 6**



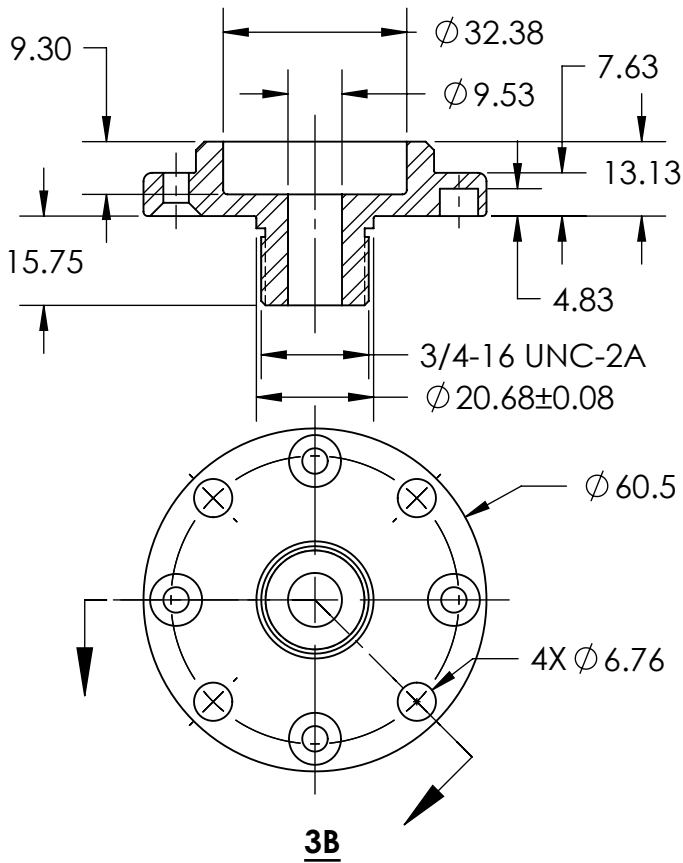
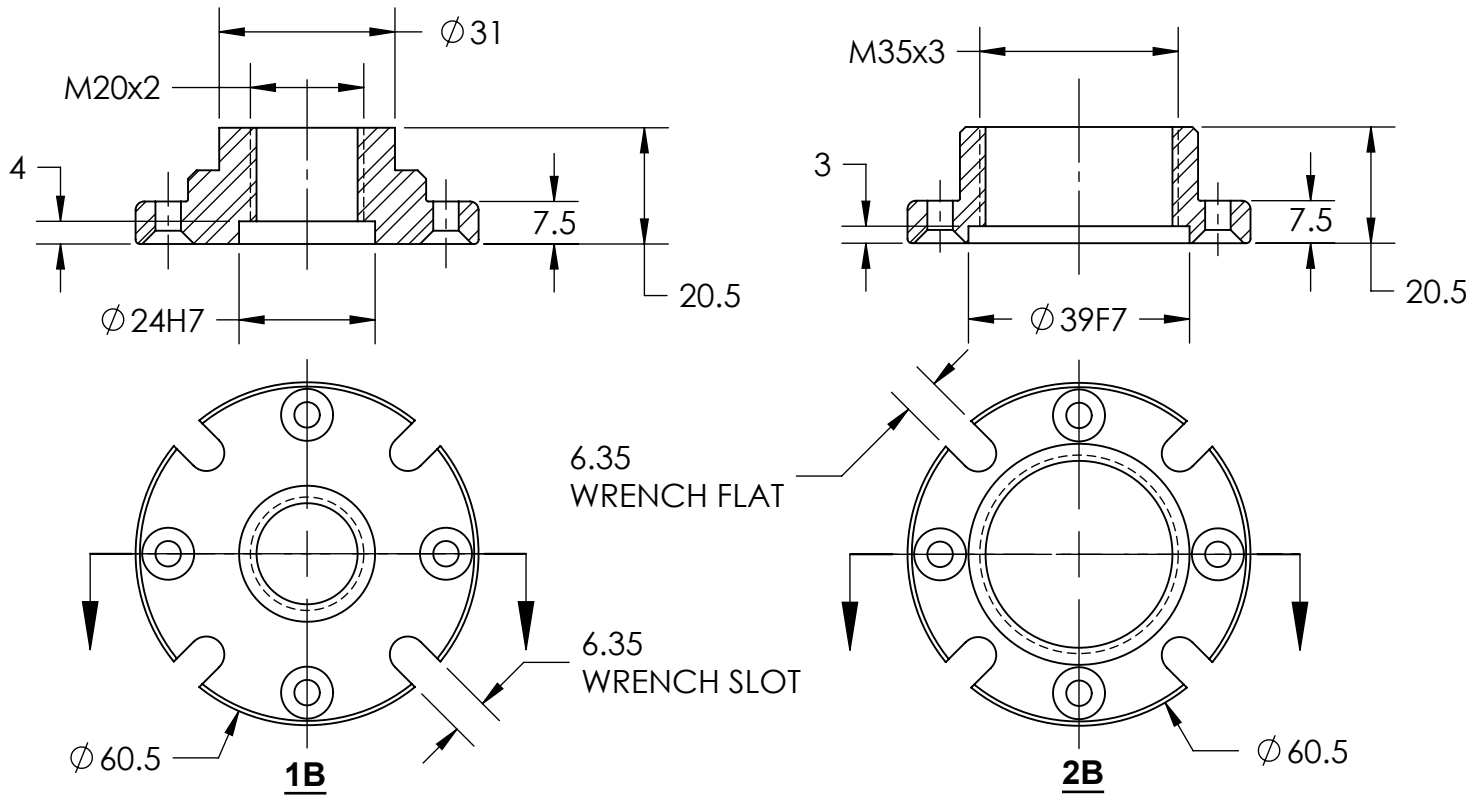
**CONFIG 7**

## RECENTI CONFIGURAZIONI

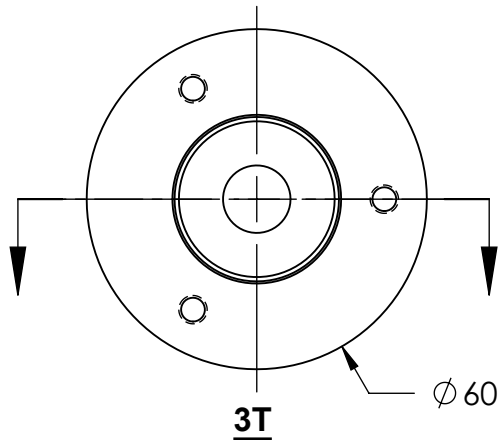
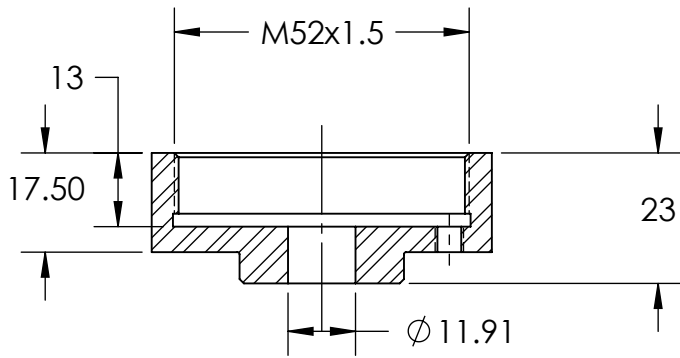
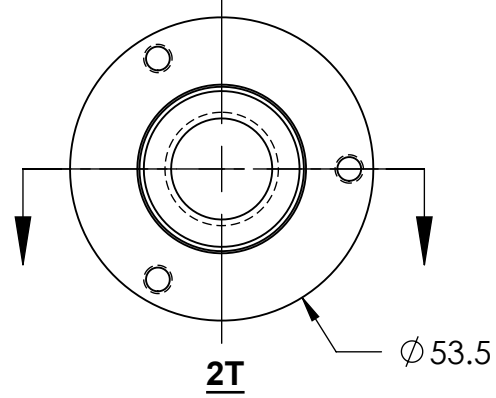
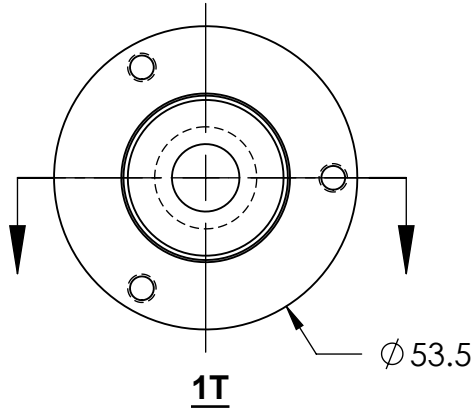
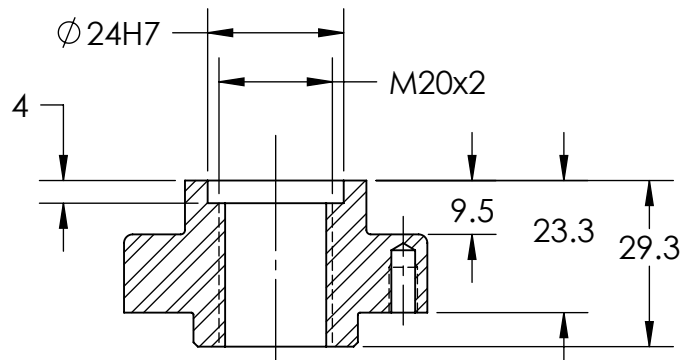
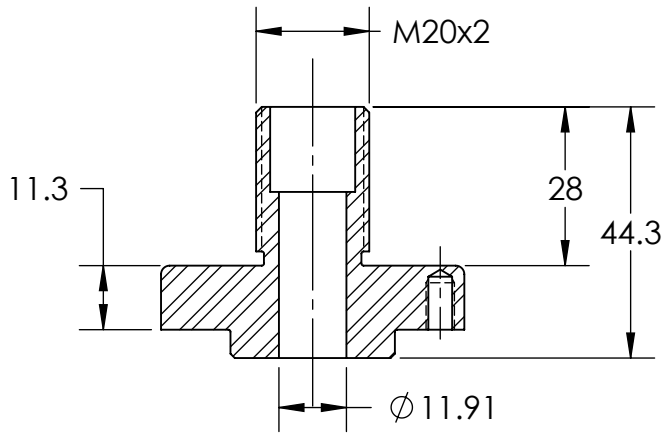
# RCC 866 - FRIZIONE AD INNESTO MAGNETICO



# RCC 866 - FRIZIONE AD INNESTO MAGNETICO

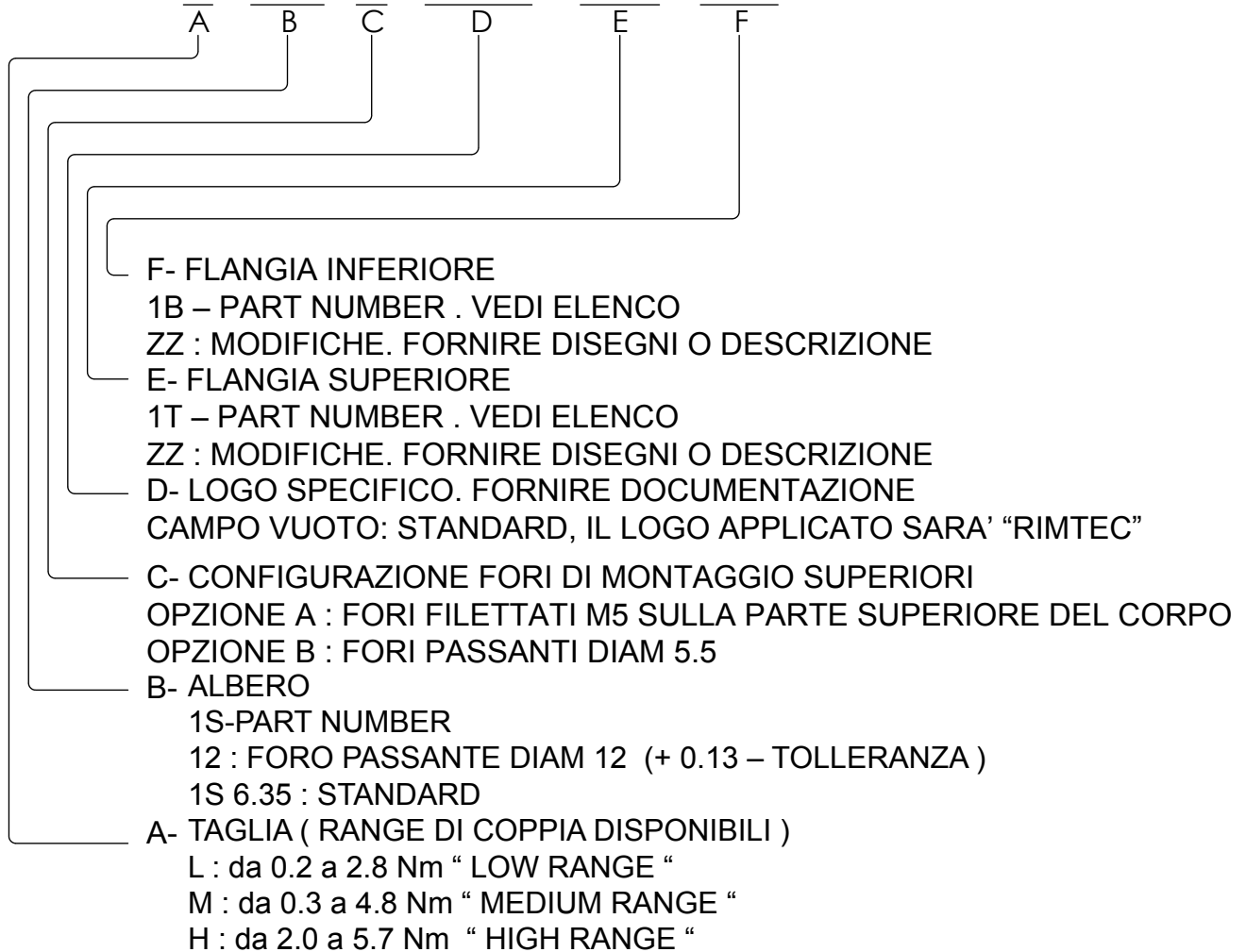


FLANGIA INFERIORE

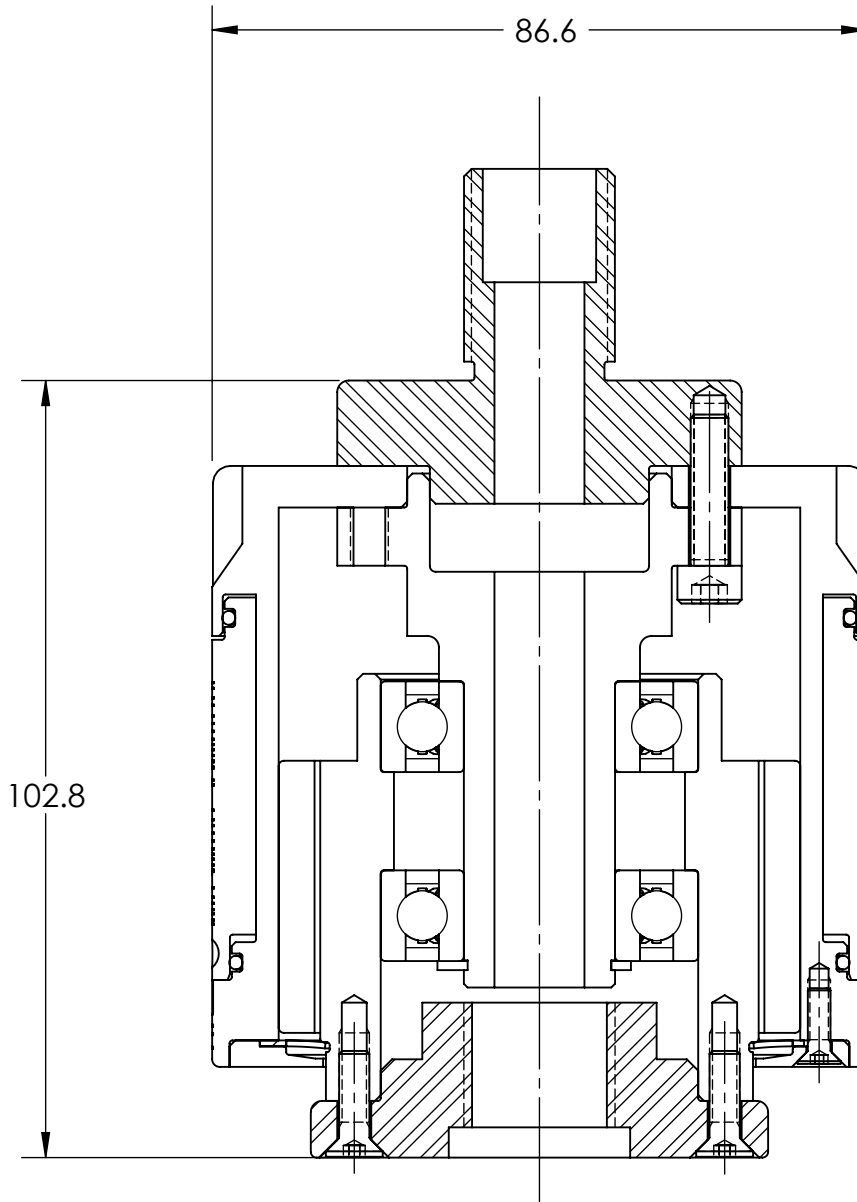


FLANGIA SUPERIORE

RCC866 - L - 1S12 - A - LOGO / 1TTY / 1BZZ

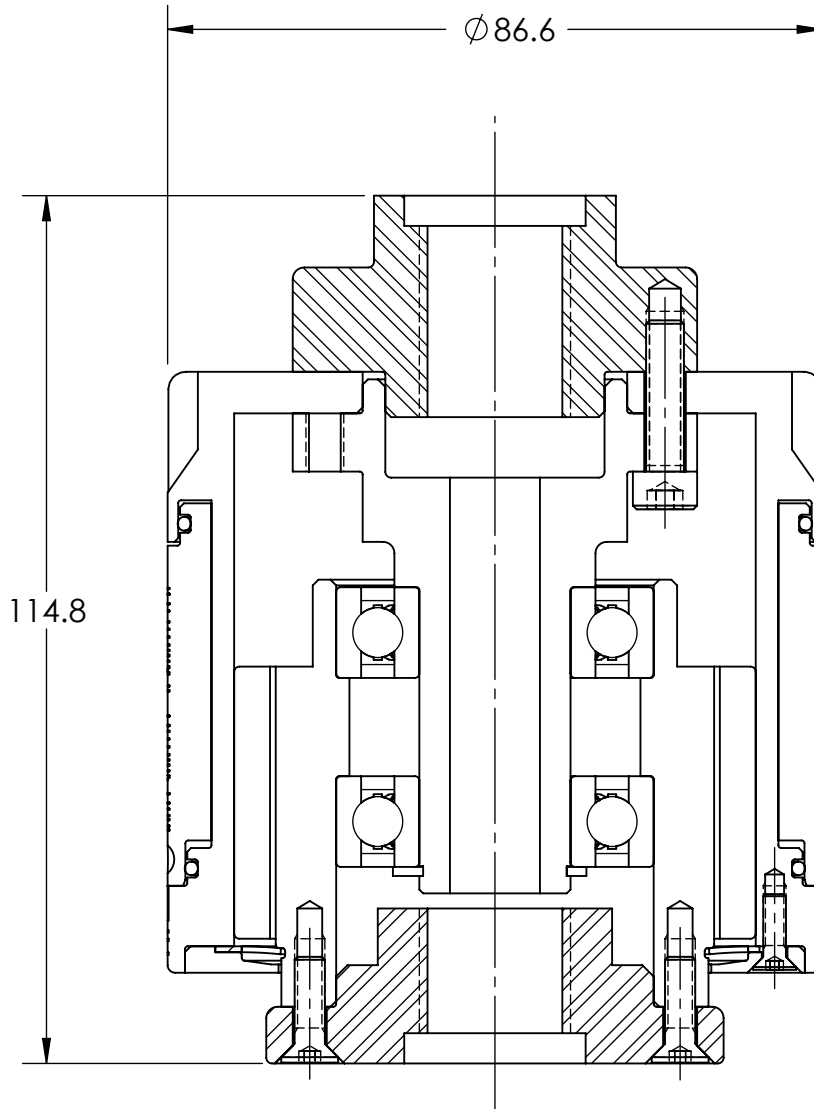


CODICE DI ORDINAZIONE

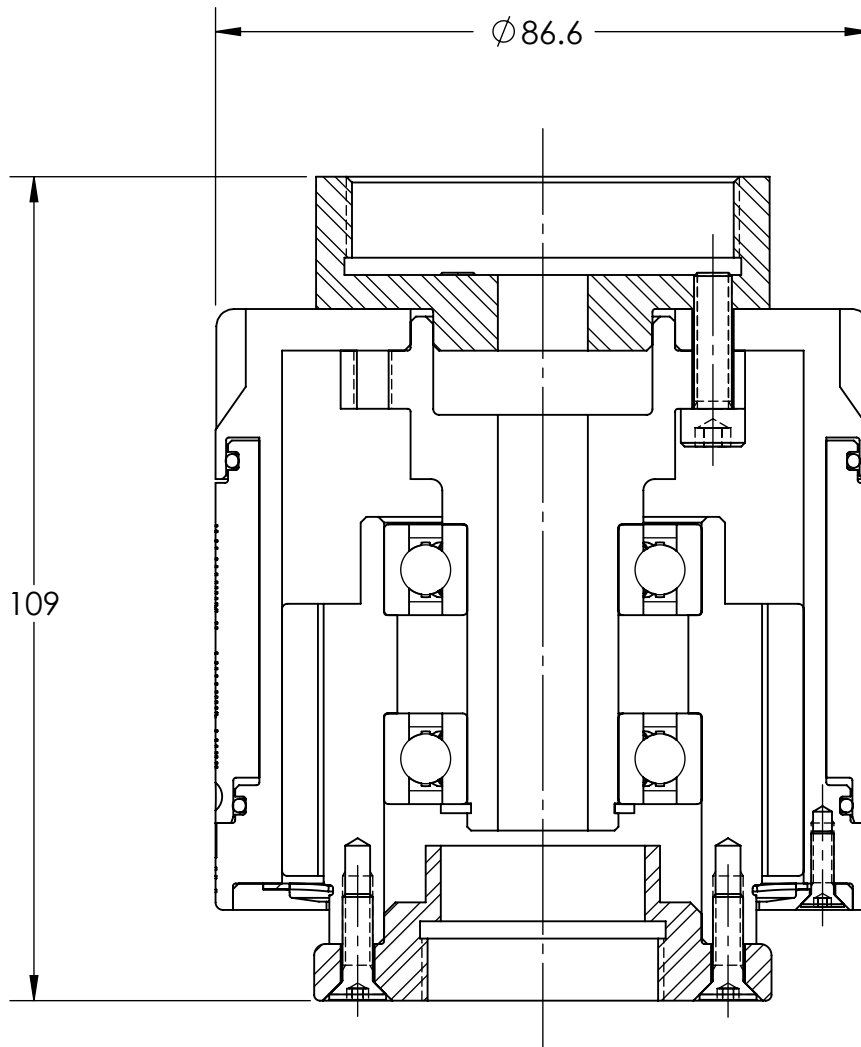


## CONFIGURAZIONE 1

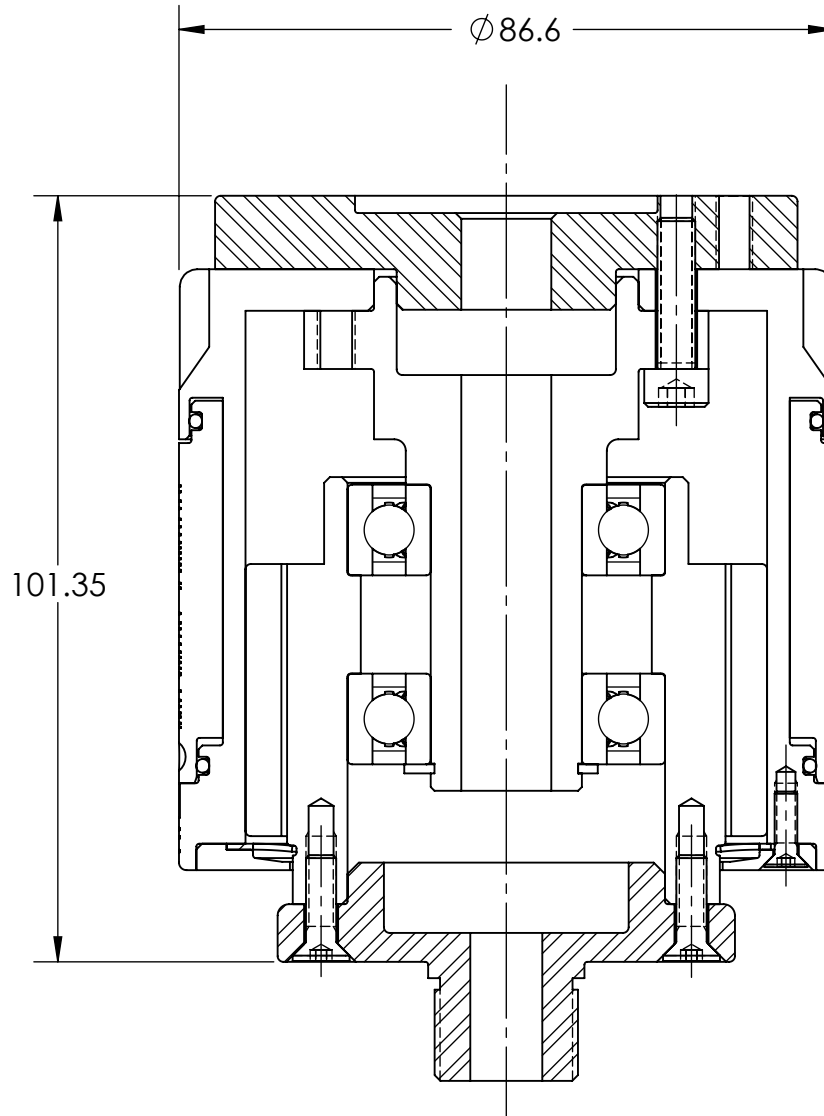




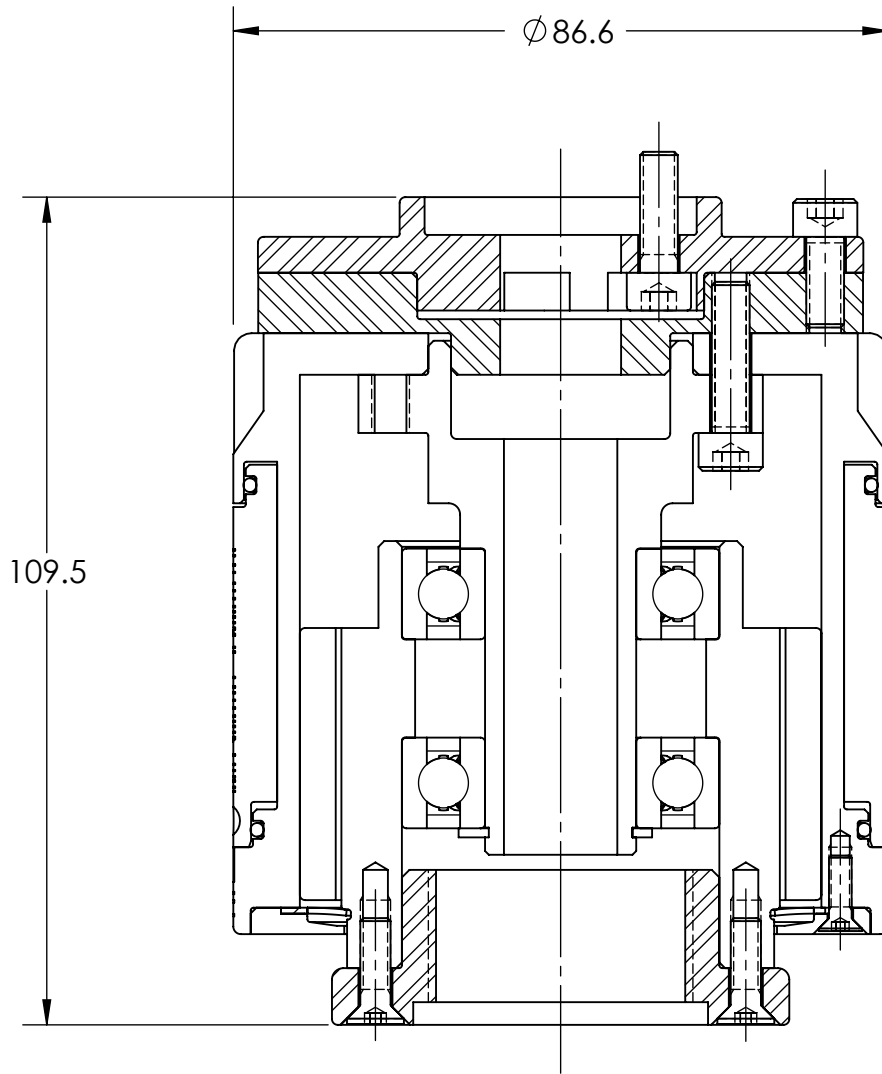
## CONFIGURAZIONE 2



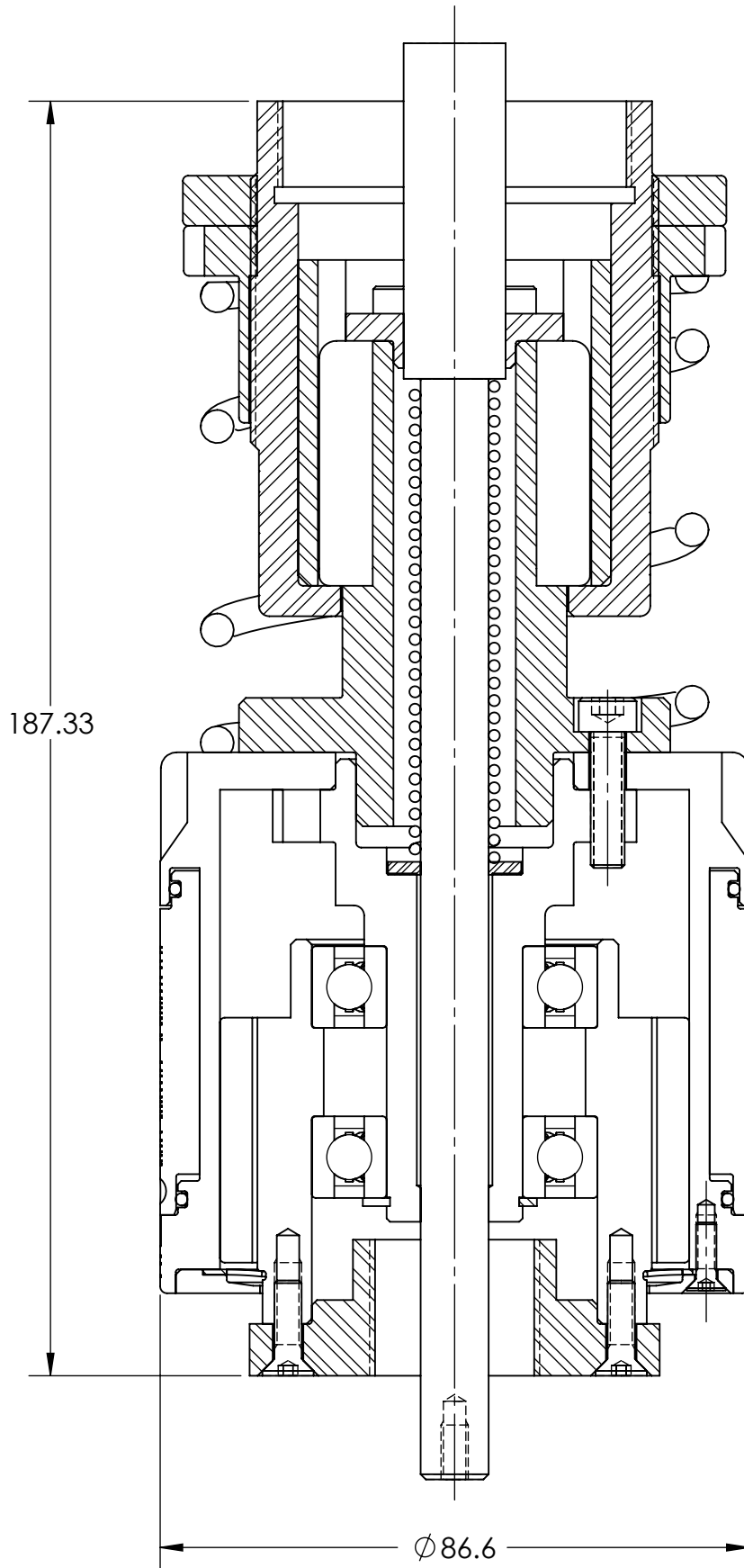
## CONFIGURAZIONE 3



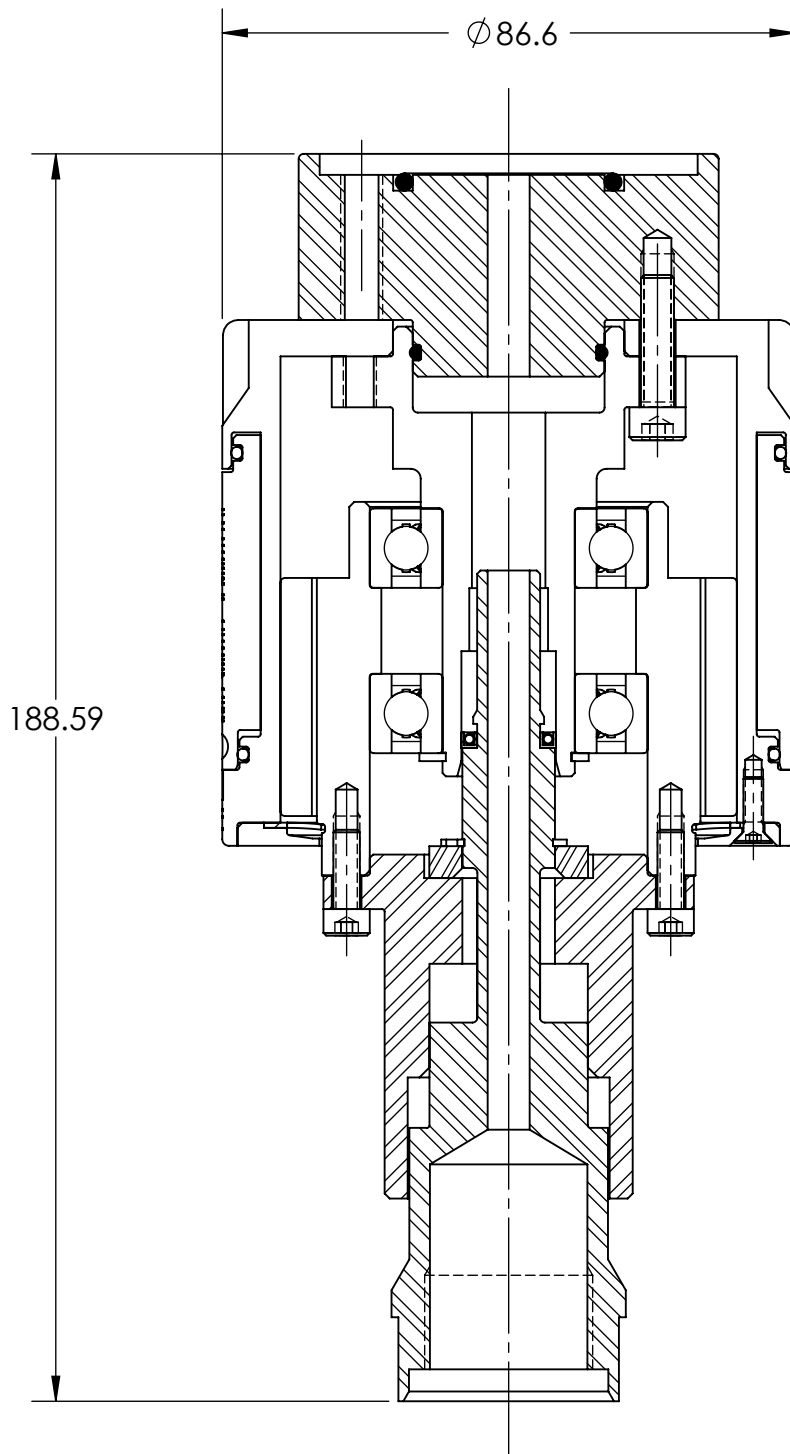
## CONFIGURAZIONE 4



## CONFIGURAZIONE 5



## CONFIGURAZIONE 6



## CONFIGURAZIONE 7