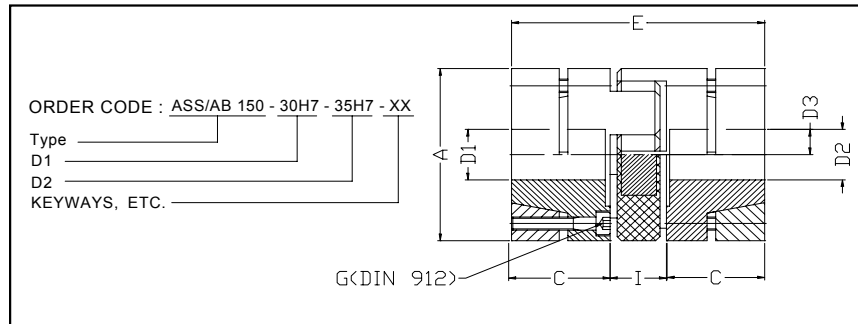
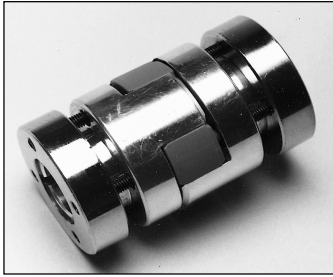


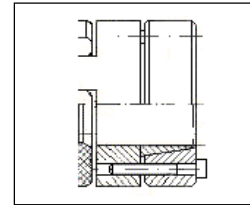
ASS/A SERVO INSERT COUPLINGS WITH CONICAL HUBS



DIMENSIONS (mm):

Type ASS/A	A	C	D1 - D2 ⁶⁾		D3	E (+/- 1)	G DIN 912	I
			Min H7	Max H7				
ASS/A 10	30	18.5	10	14	-	50	4xM3	13
ASS/A 18	40	25	10	19	12	66	6xM4	16
ASS/A 30	45	26.5	12	20	16	70	6xM4	17
ASS/A 60	55	30	15	25	20	78	4xM5	18
ASS/A 150	65	35	19	35	24	90	8xM5	20
ASS/A 300	80	45	24	40	27	114	8xM6	24
ASS/A 500	105	56	35	48	39	140	4xM10	28

* Clamping lock type B on request



- 1) Taper lock 10 to 500 made of steel.
- 2) Operating temperature range: -30° to 90° Centigrade.
- 3) Keyways according to standard DIN 6885 or American on request.
- 4) Clearance of keyway, standard JS 9.
- 5) Insert material made of Polyurethane sh 64 D (green color), 98 A (red color), and 92 A (yellow color).
- 6) Transmission of the coupling's rated torque with 92 A insert is only guaranteed for bore sizes within the recommended range with standard H7 bore tolerances, unless otherwise specified. Other types of borings can, however, be supplied by the manufacturer. All hub borings are supplied to fit standard H7 tolerance.

TECHNICAL RATINGS:

Type ASS/A	Insert Code	Rated Torque (Nm)	Torsional Stiffness (Nm/rad)	Lateral Spring Stiffness (N/mm)	Misalignment (mm) (+/-)		Misalignment Angular (degrees°) (+/-)	Moment of Inertia 10 ³ J (gcm ²)	Torque to Tighten Clamps I M _A = (Nm)	Max RPM (min ⁻¹)	Mass m (g)
					Lateral	Axial					
ASS/A 10	92 A	7.5	344	336	0.06	1	0.9	0.14	1.3	19000	60
	98 A	10	513	604							
	64 D	16	702	856							
ASS/A 18	92 A	10	1720	1120	0.06	1.2	0.9	0.62	3	14000	140
	98 A	18	2580	2010							
	64 D	21	3720	2930							
ASS/A 30	92 A	22	2663	1300	0.08	1.3	0.9	1.3	3	12000	200
	98 A	30	4380	2290							
	64 D	36	6325	3310							
ASS/A 60	92 A	35	4296	1480	0.1	1.4	0.9	2.7	6	10600	300
	98 A	60	6189	2560							
	64 D	75	8934	3696							
ASS/A 150	92 A	95	6876	1780	0.11	1.5	0.9	6.3	6	8500	550
	98 A	150	10314	3200							
	64 D	200	13050	4348							
ASS/A 300	92 A	190	13752	2350	0.12	1.8	0.9	19.5	10	7100	1000
	98 A	300	21486	4400							
	64 D	405	31462	6474							
ASS/A 500	92 A	310	18055	2580	0.16	2.1	0.9	106	69	5600	5100
	98 A	500	55925	5930							
	64 D	655	90500	8274							

The dimensioning of the couplings is always based on the peak torque (Mmax) which is to be transmitted regularly by the drive motors. For the basis of the calculation of the coupling's rated torque, see ordering data. The couplings, under no circumstances, should be submitted to a torque greater than 2.5 times the rated torque.

RIMTEC CORPORATION
 211 S. Lombard Road, Addison, IL 60101
 Toll Free: 877-4RIMTEC (877-474-6832)
 Tel: 630-628-0036, Fax: 630-628-0041
 E-mail: info@RimtecCorporation.com
 Website: www.RimtecCorporation.com